

# AIR-SEEDING EQUIPMENT

Air Carts, Disk Drills, Hoe Drills, and Openers



JOHN DEERE





# KEEP TECHNOLOGY SIMPLE

**Simple. Concise. Innovative.** We redesigned our C-Series Air Carts from the ground up keeping your technology needs in mind. Seed up to eight times more precisely<sup>1</sup> with new AccuRate™ stainless steel electric meters, letting you change speed and volume of product at each meter on the G5<sup>Plus</sup> display. Plus, the industry exclusive EZCal™ system will save you steps and time by sending those calibration numbers automatically to the cab display while the integrated tank scales do the weighing for you. So go ahead. Keep your cab clutter-free and track all your technology and data on the only display you need.



<sup>1</sup> Based on seeding with an 8 primary run air cart and an 80-foot air seeder. Prescription zones would improve from 80-foot zones to 10-foot zones.



# CONTENTS

Introduction .....2-3

## Air Carts

Leading Air Carts..... 4-5  
 • AccuRate™ Stainless Steel Electric Meters  
 • High Fidelity Prescriptions

Leading Air Carts..... 6-7  
 • SectionCommand™ Pro  
 • Curve Compensation  
 • 50-Bushel Mini-Tank  
 • Blower Packages

Trailing Air Carts.....8-9  
 • EZCal™

Trailing Air Carts..... 10-11  
 • Tank Scales and ActiveCal™  
 • Low Profile Hopper  
 • Wireless Controlled Hydraulic Conveyance System

## Air Drills

N500C No-Till Air Drills ..... 12-13  
 • AutoTrac Implement Guidance

N500 No-Till Air Drills ..... 14-15

N500F No-Till Air Drills ..... 16-17  
 • RelativeFlow™ Blockage

P600 and P500 Precision Air Hoe Drills .....18-19  
 • TruSet™ Technology

H500 and H500F Air Hoe Drills..... 20-21

## Openers

ProSeries™ Opener .....22

P600 and P500 Precision Air Hoe Drill Openers .....23

Precision Upgrades ..... 24-25

Parts, Attachments & Service..... 26-27

Precision Agriculture ..... 28-29

Specifications ..... 30-31

Dealer Service .....32



**SIZE UP**  
YOUR

**ACCURACY**



## ***HIGH FIDELITY PRESCRIPTIONS***

no significant improvement in on-farm anaerobic precision accuracy in product application accuracy compared to previous air seeders by adjusting the speed and volume of product application at each meter with individual prescriptions<sup>1</sup>

<sup>1</sup> Based on seeding with an 8 primary run air cart and an 80-foot air seeder. Prescription zones would improve from 80-foot zones to 10-foot zones.

Available on trailing and leading carts.

**Seed smart with accuracy you can measure.** With the new air carts from John Deere, you can control seed and fertilizer placement from the comfort of the cab with individually controlled AccuRate™ stainless steel electric meters. Offering total leading tank capacities from 350 bu (12.3-cu m) to 650 bu (22.9-cu m), you'll be able to see more acres between fills with the new tank split options. It features standard ActiveCal™, High-Fidelity Prescriptions, Curve Compensation, SectionCommand™ Pro and Blower Automation, so all the confidence you have in your planting is reinforced. Plus, since all air cart sets provide a great foundation for uniform emergence by minimizing soil compaction from the cart's tires.



### John Deere Leading Air Carts

MODEL	CAPACITY	TANK SPLIT
C350L	350 bu. (12.3-cu m)	160 bu. (5.6-cu m), 190 bu. (6.7-cu m)
C400L	400 bu. (14.1-cu m)	50 bu. (1.76-cu m), 160 bu. (5.64-cu m), 190 bu. (6.7-cu m)
C500L	500 bu. (17.6-cu m)	190 bu. (6.7-cu m), 90 bu. (3.2-cu m), 220 bu. (7.8-cu m)
C550L	550 bu. (19.4-cu m)	50 bu. (1.76-cu m), 190 bu. (6.7-cu m), 90 bu. (3.2-cu m), 220 bu. (7.8-cu m)
C650L	650 bu. (22.9-cu m)	50 bu. (1.76-cu m), 260 bu. (9.2-cu m), 130 bu. (1.6-cu m), 210 bu. (7.4-cu m)

## AccuRate™

### STAINLESS STEEL ELECTRIC METERS

Keep maintenance and repair costs down with the new corrosion-resistant AccuRate stainless steel electric meters.

*Available on trailing and leading carts.*



# REDUCE COSTLY OVERLAPS

Reduce costly overlaps that waste product and skips that affect plant population with **SectionCommand™ Pro**. This provides more consistency when seeing in or field swilei pro in or iel potential

You can control cost of it ow maintainin t e ri t application rates across each pri ar t an s to t e new **AccuRate™** individual electric meter. Eliminate potential seed damage and dumping effect by stopping the meter when each section is shut off, leading to even crop emergence and uniform crop maturity at harvest.

Say goodbye to overpopulating turn rows with **curve compensation**. This feature adjusts meter rates to the tool speed both on the inside and outside of a turn. The result is rows that are metered more closely, matching the desired product rate across the tool.



## BLOWER PACKAGES

Whatever your operation, our complete John Deere solution<sup>1</sup> will have the blower package you need. With **blower automation**, you can set your blower speed in the cab and the tractor will maintain it dependent on variable effects such as oil temperature or ambient conditions. Blower packages are available in:

- Single Standard-Capacity
- Double Standard-Capacity
- Single High-Capacity
- Double High-Capacity

<sup>1</sup>Requires a tractor electronic control unit 3 which is available on 30 series and newer John Deere tractors.



## 50-BUSHEL MINI-TANK

Available on C400, C550, C650 and C850 air carts, the 50-bushel mini-tank option allows for more efficient in-season fertilizer rates.

Multiple fill locations, this option provides easy filling with a standard tractor cone discharge system.

*Available on trailing and leading carts.*





# LARGE SCALE PERFORMANCE

## FOR SMALL GRAIN SEEDING

**Balance your total system with trailing air carts.** The new trailing carts offer total tank capacities ranging from 350 bu (12.3 cu m) to 850 bu (29.95 cu m). These carts are designed to provide a favorable balance between cart, tractor and drill and require less tractor horsepower to pull the entire system. The individually controlled stainless steel electric meters along with features such as EZCal, ActiveCal™, integrated tank scales, High-Fidelity Prescriptions, Curve Compensation, SectionCommand™ Pro and Blower Automation allow you to control both seed and fertilizer placement from the cab.



John Deere Trailing Air Carts

MODEL	CAPACITY	TANK SPLIT
C350T	350 bu. (12.3-cu m)	160 bu. (5.64-cu m), 190 bu. (6.7-cu m)
C400T	400 bu. (14.1-cu m)	50 bu. (1.76-cu m), 160 bu. (5.64-cu m), 190 bu. (6.7-cu m)
C500T	500 bu. (17.6-cu m)	190 bu. (6.7-cu m), 90 bu. (3.2-cu m), 220 bu. (7.8-cu m)
C550T	550 bu. (19.4-cu m)	50 bu. (1.76-cu m), 190 bu. (6.7-cu m), 90 bu. (3.2-cu m), 220 bu. (7.8-cu m)
C650T	650 bu. (22.9-cu m)	50 bu. (1.76-cu m), 260 bu. (9.2-cu m), 130 bu. (1.6-cu m), 210 bu. (7.4-cu m)
C850T	850 bu. (29.95-cu m)	50 bu. (1.76-cu m), 260 bu. (9.2-cu m), 130 bu. (1.6-cu m), 410 bu. (14.45-cu m)





## EZCal™

Save steps and time without climbing stairs and crawling under the cart with a new industry exclusive method of calibrating. With a push of the button on the side of the cart EZCal automatically calculates and sends the MDV to the cab eliminating user error. This lets you calibrate 75% faster<sup>1</sup> than previous models and 45% faster<sup>2</sup> than the leading competitor's calibration times.

<sup>1</sup> Based off internal testing of a current production bag calibration on a 1910 air cart taking 10 minutes to calibrate compared to a EZCal-equipped air cart taking 2 minutes and 15 seconds.

<sup>2</sup> Based off internal testing of a Bourgault air cart calibration taking 4 minutes compared to a EZCal-equipped air cart taking 2 minutes and 15 seconds.

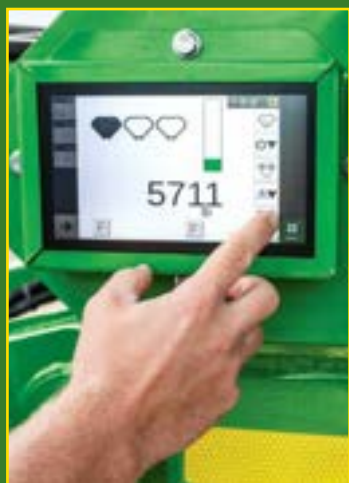
*Available on trailing and leading carts.*

# TOTAL CONTROL



Control the conveyance arm movement and elevation effortlessly with an easy-to-operate wireless remote. With less physical strain on the operator, and fewer operators needed to move it, you can now fill or transport without breaking a sweat.

*Available on trailing and leading carts.*



## TANK SCALES WITH ACTIVECAL™

Now you can recalibrate while seeding anytime from the cab with ActiveCal to verify accurate calibration numbers for changing field conditions. You can easily calculate the number of acres left in each tank with new scales positioned under each tank. With the new G5e cart side display, you'll be able to view tank scale data in real time as you fill product while also eliminating the need to walk back and forth from cab to cart when calibrating. When you're in the cab, you can use ActiveCal to verify accurate calibration numbers for consistent field conditions.







**New Low Profile Hopper for 550 bushels and smaller carts**

With twice the fill area as previous hoppers, you'll be able to fill wheat faster than previous models. Plus with the improved maneuverability, you'll be able to leave the hopper in one position when filling all tanks.



# FULL *SEED* AHEAD

**The N500C Air Drill delivers.** When time's short and you've got plenty of ground to cover, give the combination with all confidence.

With tanks up to 120-bu capacity, you'll have easy access to the meters. You can seed both small grains in fall and soybeans in spring at widths from 30 to 42 ft (9.1 to 12.8 m).

You'll see all the latest John Deere seeding technologies. Accurate in-cab adjustments. Fast, easy calibration. Greater seed efficiency at economical waterways. Accurate population control around contours. Plus, precise seed placement by our ProSeries™ Openers.

Plus, the premium lighting package enhances your visibility. We've added one light in the tank to a refill and clean easier attachment tools to the tank for easier maintenance blockage checks and overall visibility.







## **AutoTrac™** **IMPLEMENT** **GUIDANCE\***

Precisely place seed and fertilizer no matter the terrain. AutoTrac Implement Guidance steers the tractor to ensure the seeder is on the correct path.

*\*Only available on air drills paired with trailing air carts.*





N500 NO-TILL AIR DRILLS

# GETS YOU IN THE *FIELD* SOONER





## N500 No-Till Air Drills

The N500 No-Till Air Drill is an efficient no-till seeding tool that is a true workhorse in tough no-till conditions. Available in six different widths to help you get more done: 30, 36, 40, 42, 50 and 60 ft (9.1 m, 11 m, 12.5 m, 12.8 m, 15.2 m, 18.3 m)

Whether you prefer the productive 42 ft (12.89 m) or need the increased width of the 60 ft (18.3 m), all N500 No-Till Air Drills are designed for easy maintenance and operation. The exclusive active hydraulic down-pressure system lets openers follow ground contours without extra down-pressure. When combined with the exclusive active hydraulic down-pressure, you'll get accurate depth control and all-till capability.



**SEED AND  
FERTILIZE**

**UP  
TO**

**60** FT  
W I D E





# N500F No-Till Air Drill

To win big in small grains, it takes a seeding solution that superseeds your expectations. Choose from four widths in all ranging from 30 ft (9.1 m) up to 60 ft (18.3 m).

Get better flotation and reduced soil compaction from the larger mainframe and wing tires for more uniform seed depth and seed-to-soil contact. And when fields are hilly, the frame sections flex to follow the contour of the ground.

The N500F No-Till Air Drill includes Separate Fertilizer Placement to save you the time, labor, fuel, and cost of a separate fertilizer pass.



## RelativeFlow™ BLOCKAGE SOFTWARE

View flow rate of both the seed and fertilizer on a row by row basis from the inside of your cab with our RelativeFlow Blockage. This exclusive technology, available on all John Deere tools, helps identify any problems before the potential blockage occurs.



# SEED SMART. SEED PRECISELY.

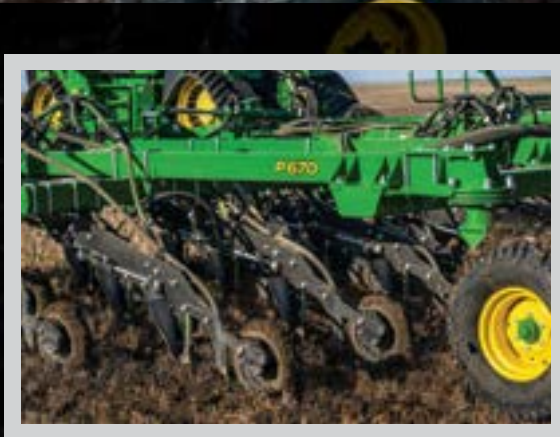
## P600 Precision Air Hoe Drills

Maximize crop potential across all soil types and field conditions with John Deere Precision Air Hoe Drills. Monitor row-to-row seeding rates with RelativeFlow™ blockage monitoring. The improved tire options provide better flotation throughout the field. TruSet technology lets the operator win an inch of downforce from the cab and on-the-go. With spacing ranging from 60 ft (18.3 m) to 90 ft (27.4 m), the dual knife openers provide uniform seed and fertilizer placement with a consistent spread of .75 in (1.9 cm) vertically and 1.5 in (3.8 cm) horizontally.



### TruSet™ TECHNOLOGY

Adjust Opener downforce pressure all from the comfort of the cab with TruSet technology. Available\* only from John Deere, jobs that previously took several minutes can now be done in just seconds so you can adapt to changing field conditions on the go and promote greater seed-to-soil contact for improved germination and more consistent emergence.



\*TruSet is only available on the N500C, N500, N500F, and P600.





## P500 Precision Air Hoe Drills

The P500 Precision Air Hoe Drill features an exclusive opener for hydraulic precision depth control that senses and adapts to changing terrain and field conditions. Fertilizer shanks and seed boots maintain consistent depth for accurate seed and fertilizer placement row after row, pass after pass, acre after acre. It is nimble and precise across the field with opportunities for higher yields.

Applying fertilizer while seeding? The P500 uses two independent hydraulic accumulators that let you set packing pressure and fertilizer trip force individually. This design eliminates the need for continuous flow to the tractor, reducing the potential for lost horsepower, all while assuring uncompromised depth control and consistent seed and fertilizer spacing. You can even feather the press-wheel down pressure as needed to adapt to field conditions.





# GREAT STANDS

**START WITH UNIFORM DEPTH CONTROL**

H500 and H500F Air Hoe Drills





create a ter acre ear a ter ear o nee a see in sol tion t at stan s p to to fiel conditions, while maintaining consistent seed depth in a variety of soils and residue levels. The H500 and H500F Air Hoe Drills help you get the most out of your seed, fertilizer, and ac iner in est ents oose ro t ree i erent wi t si es to fit o r operation 40, 41, and 61 ft (12.2 m, 12.5 m, 18.6 m). Plus, with RelativeFlow™ blockage software, you'll spot potential problems before they occur.





# SEED MORE ACRES WITHOUT ALL THE EXTRA MAINTENANCE

## ProSeries™ Opener

When it comes to seeing precision consistent seed depth and uniform emergence in virtually all field conditions, you can supersede your expectations with ProSeries.

The narrow seed foot fits tighter to the disc wheel, helping to keep the soil in place. We've replaced the old with a pin to keep the foot from slipping. This provides accurate placement, reduces wear, and ensures the seed fits better in the furrow and keeps the seed from bouncing out.

We've also improved the closing wheel to better close the trench to keep more anhydrous in the ground providing a boost to young plants. Ask your John Deere Dealer about ProSeries compatibility with air seeding equipment.

## P600 Precision Air Hoe Drill Opener

For the most efficient field operation

Place seed and fertilizer where you need with P600 Series Precision Air Hoe Drill Openers. The P600 is available with either the standard double knife or new in-line knife opener for consistent and low maintenance seeding. Both openers provide uniform seed and fertilizer placement with a consistent spread of .75 in. (1.9 cm) vertically and 1.5 in. (3.8 cm) horizontally - ensuring both seed safety and quick access to the nutrients to improve germination and overall crop potential. Depth adjustments are now also easier with standard Quick Adjust on both double knife and in-line knife openers. Reinforced and certified significantly longer life span and consistent





# P500 Precision Air Hoe Drill Opener

efficient roller or roller

The P500 Precision Air Hoe Drill Opener provides excellent depth control in paired-row and single-row settings. Hydraulic lift opens and closes in rock and roller or roller conditions





# Precision Upgrades





# AccuRate™ Meters Precision Upgrade Kit

Seed up to 8x more accurately\* with individually controlled AccuRate™ stainless steel electric meters. Unlocking capabilities such as High Fidelity prescriptions, Curve Compensation and SectionCommand Pro you'll have confidence that product is being accurately distributed. Keep maintenance and repair costs down with the new corrosion-resistant AccuRate stainless steel electric meters. Made of 316-grade stainless steel, this precision upgrade provides better corrosion resistance than 304-grade stainless steel.

The AccuRate™ Meters Precision Upgrade Kit is compatible with the C650 and C850 Air Carts.

Kit will contain all the components to fully upgrade your air cart, such as, meters, harnesses, controllers, electric power generation, air plumbing, G5e Cart Side display and optional EzCal™ system



\*Based on seeding with an 8 primary run air cart and an 80-foot air seeder. Prescription zones would improve from 80-foot zones to 10-foot zones.





## STAY UP AND RUNNING WITH YOUR LOCAL DEALER

The John Deere dealer network is here to serve you. If you need a part, attachment, or service, you can go to a local dealer and get their expertise to find the right solution or to get the now the ins and outs of your air seeder and have a clear understanding of your unique needs. You can count on our highly skilled technicians to keep you up and running.

Stop by the One Parts Counter today. We offer a 12-months limited parts and labor warranty\* and multiple financing options as needed.\*\*

THE **JOHN DEERE**  
**DIFFERENCE**

- Industry expert technicians
- Recommendations based on your budget
- 12 months parts & labor warranty\*
- or lower financing options\*\*

\* 12 month/unlimited hour warranty on most new John Deere agriculture parts when installed by an authorized John Deere Dealer. 6 month/unlimited hour warranty for most new John Deere agricultural and turf equipment parts. See John Deere Service Parts Warranty US & Canada and participating dealers for more details. Most A&I/Sunbelt parts carry a 1-year warranty. Some exclusions apply. See your participating A&I re-seller or John Deere Dealer for details.

\*\* Financing on approved John Deere Financial credit only. Contact your Multi-Use Account merchant or dealer for complete details.



# AFTERMARKET PARTS & UPGRADES



## Pro-Series™ Opener Aftermarket Upgrade

Gain agronomic advantages and extended wear life for your 90 Series Opener with a Pro-Series Opener aftermarket upgrade. Offers five parts: seed boot, press wheel, serrated closing wheel, seed tab, and closing spring. Opener disc also included.



## SFP (Separate Fertilizer Placement) Opener Aftermarket Upgrade

Newly designed sealing plates and scrapers improve the NH<sub>3</sub> sealing capacities of the separate fertilizer placement opener for the 90 Series Opener. Aftermarket upgrade bundle includes scraper, sealing plate, disk opener, and hardware.



## Heavy-Duty Bearings

Better protect your gauge and closing wheels from dirt and debris with new, heavy-duty bearings. Excellent for tough seeding conditions and high speeds.



## Packer Wheel

A newer and wider version of a packer wheel is now available for improved seed-to-soil contact to enhance emergence.



## Spoke Gauge Wheels

An ideal solution for seeding in wet soil conditions, spoke gauge wheels allow mud and debris to flow through the wheel for superior depth performance. Available in standard or narrow widths. Heavy duty options are also available for extended wear life.



## Main Opener Pivot Pin & Bushing Kit

Containing pin, bushings, and all necessary hardware to service one row, this kit reduces prices compared to individual parts and makes ordering and service simpler to manage.



## Depth Adjust Kit

With a handle, cover, and all necessary hardware for one row, this kit solves issues with wear on the cover and/or handle, offers added strength and durability to Pro-Series and allows 90 Series Opener customers to easily upgrade to Pro-Series components.



# YOUR LINK TO YOUR MACHINES & FIELDS

## JDLink™ Connected Service

Connect your machine for free.

With JDLink connected service, machine and agronomic data automatically flows to John Deere Operations Center™ account, allowing you to remotely support your machines and operators.

Location History lets you view the path traveled by your machine over a 24-hour period for up to 60 days. Monitor location, ground speed, heading, and working or idling status.

## John Deere Operations Center™

Turn your valuable data into a profitable plan of action

Your seeding data is only useful if you can easily access and share it away from the field. With a free Operations Center account<sup>1</sup>, you can turn your data into insightful actions. And with your permission, you can easily share that data with your trusted partners or advisors.

## Operations Center Mobile

View your entire farm from any device

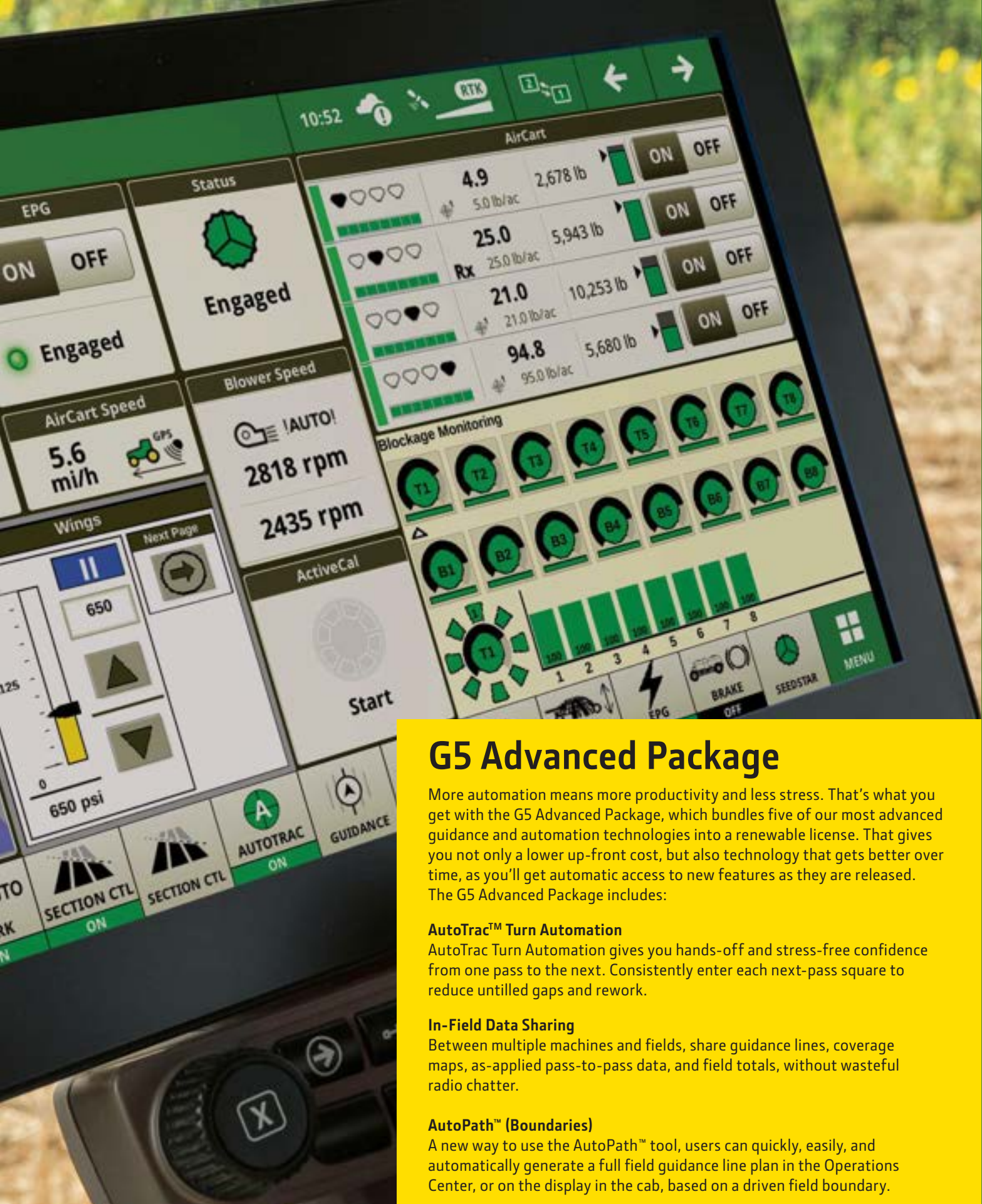


Keep track of your operation anytime, anywhere, with the Operations Center Mobile app. In near real time, you can view planting data, such as seeding spread, varieties, and as-applied and planned seeding rates.



<sup>1</sup> Activation required. JDLink hardware comes standard with the machine. The customer can turn on the JDLink service in their Operations Center account for free. JDLink requires a cellular connection to transfer information from machine to JDLink website. Consult your John Deere Dealer for coverage availability.





## G5 Advanced Package

More automation means more productivity and less stress. That's what you get with the G5 Advanced Package, which bundles five of our most advanced guidance and automation technologies into a renewable license. That gives you not only a lower up-front cost, but also technology that gets better over time, as you'll get automatic access to new features as they are released. The G5 Advanced Package includes:

### **AutoTrac™ Turn Automation**

AutoTrac Turn Automation gives you hands-off and stress-free confidence from one pass to the next. Consistently enter each next-pass square to reduce untilled gaps and rework.

### **In-Field Data Sharing**

Between multiple machines and fields, share guidance lines, coverage maps, as-applied pass-to-pass data, and field totals, without wasteful radio chatter.

### **AutoPath™ (Boundaries)**

A new way to use the AutoPath™ tool, users can quickly, easily, and automatically generate a full field guidance line plan in the Operations Center, or on the display in the cab, based on a driven field boundary.

<b>N500 No-Till Air Drill</b>		
<b>MACHINE CONFIGURATIONS</b>	<b>7.5 in. (19.05 cm) Spacing</b>	<b>10 in. (25.40 cm) Spacing</b>
N530 (30-ft; 9.14-m)	48	36
N536 (36-ft; 10.97-m)	58	44
N540 (40-ft; 12.19-m)	64	48
N542 (42-ft; 12.80-m)	68	50
N550 (50-ft; 15.24-m)	80	60
N560 (60-ft; 18.29-m)	96	72

<b>P600 Precision Air Hoe Drill</b>	<b>P660</b>	<b>P670</b>	<b>P680</b>	<b>P690</b>
<b>MACHINE CONFIGURATIONS</b>	<b>60 ft (18.28 m) 5-section models</b>	<b>70 ft (21.33 m) 5-section models</b>	<b>80 ft (24.38 m) 5-section models</b>	<b>90 ft (27.43 m) 5-section models</b>
Openers system	Independent dual knife design with separate fertilizer placement.			
Standard Features	Carriage tipper knives maintenance free pinpoint standard residue ejector			
Number of Openers	60-72	70-84		
Row Spacing	10 or 12 in. (25.4 cm or 30.48 cm)	10 or 12 in. (25.4 cm or 30.48 cm)	10 in. (25.4 cm)	12 in. (30.48 cm)
Number of Ranks	3	3	3	3
Space between Ranks	50 in. (127 cm)	50 in. (127 cm)	50 in. (127 cm)	50 in. (127 cm)

<b>P500 Precision Air Hoe Drill</b>	<b>P540</b>	<b>P556</b>
<b>MACHINE CONFIGURATIONS</b>	<b>40 ft (12.19 m) 3-section models</b>	<b>56 ft (17.06 m) 5-section models</b>
Openers system	Independent but linked fertilizer shank and seed opener	
Standard Features	Carbide on fertilizer knife and seed opener	
Number of Openers	40	56
Row Spacing	12 in. (30.48 cm) (Optional Paired Row)	
Number of Ranks	3	3
Space between Ranks	Minimum of 50 in. (127.00 cm)	

<b>N500F No-Till Air Drill</b>	<b>N530F</b>	<b>N536F</b>	<b>N540F</b>	<b>N543F</b>	<b>N560F</b>
<b>MACHINE CONFIGURATIONS</b>	<b>30 ft (9.14 m)</b>	<b>36 ft (10.97 m)</b>	<b>40 ft (12.19 m)</b>	<b>43 ft (13.10 m)</b>	<b>60 ft (18.28 m)</b>
Seed Spacing	10 in. (25.40 cm)	10 in. (25.40 cm)	10 in. (25.40 cm)	10 in. (25.40 cm)	10 in. (25.40 cm)
Fertilizer Spacing	20 in. (50.80 cm)	20 in. (50.80 cm)	20 in. (50.80 cm)	20 in. (50.80 cm)	20 in. (50.80 cm)
Seed openers	36	44	48	52	72
Fertilizer openers	18	22	24	26	36

<b>N500C No-Till Air Drill</b>	<b>N530C</b>	<b>N536C</b>	<b>N540C</b>	<b>N542C</b>
<b>MACHINE CONFIGURATIONS</b>	<b>30 ft. (9.14 m)</b>	<b>36 ft. (10.97 m)</b>	<b>40 ft. (12.19 m)</b>	<b>42 ft. (13 m)</b>
<b>Dual Rank Number of Openers</b>				
7.5 in. (19.05 cm) Spacing	48	58	64	68
10 in. (25.40 cm) Spacing	36	44	48	50
<b>Single Rank Number of Openers</b>				
15 in. (38.10 cm) Spacing	24	28	32	34

<b>H500 and H500F Air Hoe Drills</b>	<b>H500 Air-Hoe Drill</b>		<b>H500F Air-Hoe Drill</b>	
<b>MACHINE CONFIGURATIONS</b>	<b>Width</b>	<b>Row Spacing</b>	<b>Width</b>	<b>Row Spacing</b>
3-section models	H541 (41 ft; 12.49 m)	7.5, 10, 12.5 in. (19.05, 25.40, 31.75 cm)	H540F (40 ft; 12.19 m)	10 in. (25.40 cm)
5-section models	H550 (50 ft; 15.24 m)	7.5, 10, 12.5 in. (19.05, 25.40, 31.75 cm)	H550F (50 ft; 15.24 m)	10 in. (25.40 cm)
	H561 (61 ft; 18.59 m)	7.5, 10, 12.5 in. (19.05, 25.40, 31.75 cm)	H560F (60 ft; 18.29 m)	10 in. (25.40 cm)

<b>730 LL Air Disk Drill</b>			
<b>MACHINE CONFIGURATIONS</b>	<b>28 ft. (8.53 m)</b>	<b>36 ft. (10.97 m)</b>	<b>44 ft. (13.4 m)</b>
<b>Mainframe Dimensions</b>			
Type	3-Section, 5-Bar Design with Over-Center Fold		
Cross Members	3x4-in. (75x102 mm)		
End Tubes	2x5-in. (54x127 mm)		
Hitch	6x10 in. (152x254 mm) Tubular level lift		
Rockshaft	5.5x3.75 in. (140x10 mm)		5.5x5 in. (140x13 mm)
Center Frame Width	11 ft 9 in. (3.58 m)	11 ft. 9 in. (3.58 m)	14 ft. 9 in. (4.50 m)



AIR CARTS	C350L	C400L	C500L	C550L	C650L
	Leading	Leading	Leading	Leading	Leading
<b>CART CAPACITY</b>					
Total (Bushels)	350 bu (12.3 cu m)	400 bu (14.1 cu m)	500 bu (17.6 cu m)	550 bu (19.4 cu m)	650 bu (22.9 cu m)
Number of Tanks	2	3	3	4	4
Tank Splits (Bushels)	160 (5.6 cu m) 190 (6.7 cu m)	50 (1.8 cu m) 160 (5.6 cu m)	90 (3.2 cu m) 190 (6.7 cu m)	50 (1.8 cu m) 90 (3.2 cu m) 190 (6.7 cu m) 220 (8.8 cu m)	50 (1.8 cu m) 130 (4.6 cu m) 210 (7.4 cu m) 260 (9.2 cu m)
<b>CONVEYANCE</b>					
Conveyor Capacity (Wheat)	66 bu/min	66 bu/min	66 bu/min	66 bu/min	100 bu/min
Auger Capacity (Wheat)	49 bu/min	49 bu/min	49 bu/min	49 bu/min	N/A
<b>AIR SYSTEM</b>					
Blower Options	Standard Capacity	Standard Capacity	Standard Capacity or High Capacity	Standard Capacity or High Capacity	Standard Capacity or High Capacity
Number of Blowers	Single or Dual	Single or Dual	Single or Dual	Single or Dual	Single or Dual
Product Delivery Hoses	2.5 in. (6.4 cm)	2.5 in. (6.4 cm)	2.5 in. or 3 in. (6.4 cm or 7.6 cm)	2.5 in. or 3 in. (6.4 cm or 7.6 cm)	2.5 in. or 3 in. (6.4 cm or 7.6 cm)
<b>METERING</b>					
Meter Housing Material	Stainless Steel	Stainless Steel	Stainless Steel	Stainless Steel	Stainless Steel
<b>DIMENSIONS</b>					
Height (Transport)	13 ft 2 in. (4.00 m)	13 ft 2 in. (4.00 m)	13 ft 2 in. (4.00 m)	13 ft 2 in. (4.00 m)	13 ft 4 in. (4.05m)
Height (Field)	13 ft 9 in. (4.20 m)	13 ft 9 in. (4.20 m)	13 ft 9 in. (4.20 m)	13 ft 9 in. (4.20 m)	16 ft 3 in. (4.94m)
Length Overall	31 ft 1 in. (9.47 m)	31 ft 1 in. (9.47 m)	31 ft 9 in. (9.68 m)	31 ft 9 in. (9.68 m)	39 ft 5 in. (12.0m)
Width with Base Equipment Tires	13 ft 9 in. (4.2 m)	13 ft 9 in. (4.2 m)	17 ft 6 in. (5.34 m)	17 ft 6 in. (5.34 m)	20 ft 2 in. (6.16m)
Width with High Floation tires	17 ft 6 in. (5.34 m)	17 ft 6 in. (5.34 m)	18 ft 10 in. (5.75 m)	18 ft 10 in. (5.75 m)	21 ft 8 in. (6.62m)
Shipping Weight - Base Equipment	13530 lb (6137 kg)	14692 lb (6664 kg)	19806 lb (8984 kg)	21320 lb (9671 kg)	29671 lb (14250 kg)
Shipping Weight - High Floation Option	16308 lb (7397 kg)	17469 lb (7924 kg)	21516 lb (9760 kg)	23031 lb (10447 kg)	31176 lb (14932 kg)
<b>FRONT TIRES</b>					
Base Equipment	N/A	N/A	N/A	N/A	N/A
High Floation Option	N/A	N/A	N/A	N/A	N/A
<b>REAR TIRES</b>					
Base Equipment	710/70R-38R1W (Singles)	710/70R-38R1W (Singles)	650/85R38 173B R-1W FS (Duals)	650/85R38 173B R-1W FS (Duals)	800/70R38 SFT (Duals)
High Floation Option	650/85R38 173B R-1W FS (Duals)	650/85R38 173B R-1W FS (Duals)	800/70R38 (Duals)	800/70R38 (Duals)	IF850/75R42 CFO/CHO (Duals)

AIR CARTS	C350T	C400T	C500T	C550T	C650T	C850T
	Trailing	Trailing	Trailing	Trailing	Trailing	Trailing
<b>CART CAPACITY</b>						
Total (Bushels)	350	400	500	550	650	850
Number of Tanks	2	3	3	4	4	4
Tank Splits (Bushels)	160 (5.6 cu m) 190 (6.7 cu m)	50 (1.8 cu m) 160 (5.6 cu m) 190 (6.7 cu m)	90 (3.2 cu m) 190 (6.7 cu m) 220 (8.8 cu m)	50 (1.8 cu m) 90 (3.2 cu m) 190 (6.7 cu m) 220 (8.8 cu m)	50 (1.8 cu m) 130 (4.6 cu m) 210 (7.4 cu m) 260 (9.2 cu m)	50 (1.8 cu m) 130 (4.6 cu m) 260 (9.2 cu m) 410 (14.5 cu m)
<b>CONVEYANCE</b>						
Conveyor Capacity (Wheat)	66 bu/min	66 bu/min	66 bu/min	66 bu/min	100 bu/min	100 bu/min
Auger Capacity (Wheat)	49 bu/min	49 bu/min	49 bu/min	49 bu/min	N/A	N/A
<b>AIR SYSTEM</b>						
Blower Options	Standard Capacity	Standard Capacity	Standard Capacity or High Capacity	Standard Capacity or High Capacity	Standard Capacity or High Capacity	High Capacity
Number of Blowers	Single or Dual	Single or Dual	Single or Dual	Single or Dual	Single or Dual	Single or Dual
Product Delivery Hoses	2.5 in.	2.5 in.	2.5 in. or 3 in. (6.4 cm or 7.6 cm)	2.5 in. or 3 in. (6.4 cm or 7.6 cm)	2.5 in. or 3 in. (6.4 cm or 7.6 cm)	3 in. (7.6 cm)
<b>METERING</b>						
Meter Housing Material	Stainless Steel	Stainless Steel	Stainless Steel	Stainless Steel	Stainless Steel	Stainless Steel
<b>DIMENSIONS</b>						
Height (Transport)	13 ft 2 in (4.00 m)	13 ft 2 in (4.00 m)	13 ft 2 in. (4.00 m)	13 ft 2 in. (4.00 m)	13 ft 4 in. (4.05 m)	13 ft 4 in. (4.05 m)
Height (Field)	13 ft 9 in (4.20 m)	13 ft 9 in (4.20 m)	13 ft 9 in. (4.20 m)	13 ft 9 in. (4.20 m)	16 ft 3 in. (4.94 m)	16 ft 3 in. (4.94 m)
Length Overall	27 ft 1 in (8.27 m)	27 ft 1 in (8.27 m)	28 ft 7 in. (8.72 m)	28 ft 7 in. (8.72 m)	38 ft 11 in. (11.86 m)	44 ft 7 in. (13.582 m)
Width with Base Equipment Tires	13 ft 9 in (4.2 m)	13 ft 9 in (4.2 m)	17 ft 6 in. (5.34 m)	17 ft 6 in. (5.34 m)	17 ft 8 in (5.38 m)	20 ft 2 in. (6.16 m)
Width with High Floation tires	17 ft 6 in (5.34 m)	17 ft 6 in (5.34 m)	18 ft 10 in. (5.75 m)	18 ft 10 in. (5.75 m)	20 ft 2 in. (6.16 m)	21 ft 8 in. (6.62 m)
Shipping Weight - Base Equipment	16305 lb (7396 kg)	17467 lb (7923 kg)	22661 lb (10279 kg)	24178 lb (10967 kg)	32761 lb (15650 kg)	35468 lb (16088 kg)
Shipping Weight - High Floation Option	19987 lb (9066 kg)	21149 lb (9593 kg)	25276 lb (11465 kg)	26793 lb (12115 kg)	34839 lb (16594 kg)	37340 lb (16937 kg)
<b>FRONT TIRES</b>						
Base Equipment	21.5L-16.1 I-3T 8PR (Duals)	21.5L-16.1 I-3T 8PR (Duals)	21.5L-16.1 I-3T 8PR (Duals)	21.5L-16.1 I-3T 8PR (Duals)	IF800/70R38 CFO/CHO tires	800/70R38 SFT tires
High Floation Option	710/70R-38R1W (Singles)	710/70R-38R1W (Singles)	650/50R22.5 885 I-3 163D (Duals)	650/50R22.5 885 I-3 163D (Duals)	IF900/75R32 CFO/CHO tires	IF900/75R32 CFO/CHO tires
<b>REAR TIRES</b>						
Base Equipment	650/85R38 173B R-1W FS (Duals)	650/50R22.5 885 I-3 163D (Duals)	650/85R38 173B R-1W FS (Duals)	650/85R38 173B R-1W FS (Duals)	650/85R38 (Duals)	800/70R38 SFT (Duals)



## ***Supported by one of the most responsive dealer networks in the business***

Nobody cares more about keeping your equipment in solid working order than your John Deere dealer. With a complete inventory of genuine John Deere parts, highly trained service technicians, and a thorough understanding of your business, your John Deere dealer knows how to keep you and your equipment up and running.

A strong name in equipment, and a strong dealership network: get it all with John Deere.

*This literature has been compiled for worldwide circulation. While general information, pictures and descriptions are provided, some illustrations and text may include finance, credit, insurance, product options and accessories NOT AVAILABLE in all regions. PLEASE CONTACT YOUR LOCAL DEALER FOR DETAILS. John Deere reserves the right to change specification and design of all products described in this literature without notice. Copyright 2024 Deere & Company.*



**JOHN DEERE**