

# Compact Utility Tractors

1 Series / 2 Series / 3 Series / 4 Series



JOHN DEERE



# Contents

## Outstanding Features

Discover the value a John Deere compact utility tractor can offer you through numerous innovations and intelligent features.





Augusta Elements ..... 4–5  
All-round Support ..... 6–7  
Outstanding Features ..... 8–9  
Loaders ..... 10  
AutoConnect™ Mowing Decks ..... 11  
Additional Equipment ..... 11

**Compact Utility Tractors**

1 Series ..... 12–13  
2 Series ..... 14–15  
3 Series ..... 16–19  
4 Series ..... 20–23

**Attachments** ..... 24–25

**Specifications** ..... 26–31

# Augusta Elements

Earth, air, water, fire... you'll find all of these at the American John Deere factory in Grovetown, Georgia. But it's the fifth element that really makes the difference: the engineers and craftsmen who design and assemble our compact utility tractors there for the entire world.

Using state-of-the-art technology, they fashion iron and steel, rubber and glass into machines of the highest possible standards. John Deere has a passion for quality engineering, and it shows. In every nut, bolt and weld of our compact utility tractors and on the faces of the people who are proud to build them.

## Made for Australia & New Zealand

We never compromise. From metric nuts and bolts to emission standards and safety warnings, each machine is all set up and ready to go.

## Built for Australia & New Zealand

In Augusta, we factory-fit every tractor with the correct technology for the region it's destined for. So when you buy a 1, 2, 3, or 4 Series model in Australia & New Zealand, you can be sure it has everything you need to operate smoothly and safely from the very start. From mirrors and lights to emission standards and safety warnings, our people in Augusta pull out all the stops to make sure you enjoy the best of both worlds: USA build quality, plus Australian and New Zealand specifications.



**David King** is a **Manufacturing Engineer** who plans and oversees the production lines for 3 and 4 Series premium compact utility tractors. Every day, he looks for ways to add even more quality through the tools, processes and quality control checks he specifies.

***"We never assume something will be all right—we make darn sure it is."***

David King  
Manufacturing Engineer



**John Deere Augusta** began building 1, 2, 3 and 4 Series Compact Utility Tractors in 1990. The facility currently produces 22 different models that are distributed throughout North America and globally to over 40 different countries. It occupies more than 37,000 square metres and employs approximately 470 employees.



# All-round Support

From advice and sales to maintenance and repairs, your local John Deere partner has everything you need to keep your investment running like clockwork. Find your nearest John Deere dealer today at [dealerlocator.deere.com](https://dealerlocator.deere.com)



## A global community

The people at your local John Deere dealership are always there for you—with personal service you can rely on. As part of the John Deere community, they combine their own individual style with all the benefits of a strong global company.

## Tailor-made financing

John Deere Financial has been helping customers grow their businesses for more than 150 years. Based on our unique understanding of your market and the challenges you face, we offer competitive, tailor-made financing for the machines you need to raise your game.

Your local John Deere dealer can help you choose the options that suit your business best. Why not drop in for a chat?



### Facts, not guesswork

Ever wished you could X-ray your machine to see how it's doing inside? Expert Check is the next best thing: a thorough diagnosis of all key components (including sensors, electronics and software) using up-to-the-minute, field-based checklists and tools that are exclusive to John Deere dealers. The result is a detailed report stating exactly where your machine stands, as well as what needs doing and when.

### Service ADVISOR™

Intelligent machine diagnostics via Service ADVISOR technology ensure efficient, cost effective solutions to keep your machine operating at its optimum level.



### Spares and repairs

Even a John Deere needs repairs eventually. When the day comes, our dealers pull out all the stops to keep downtime to a minimum. With a state-of-the-art workshop and a fully trained technical team on hand, they can provide professional support being equipped with the latest updates directly from the factories. For smaller repairs you'd rather do yourself, they can supply everything you need—even for older models.

# Outstanding Features

With practical solutions and advanced technology, our compact utility tractors take the hard work out of hard work.



## Solid baseline

A robust chassis provides the platform for the toughest tasks, from towing large loads through to the shock resistance needed for loader work.

## ComfortGard™ Cab—3R & 4R Series

Designed for outstanding comfort all year round, ComfortGard Cabs are fully sealed and pressurised to reduce the noise levels down to just 79 dB(A). The air conditioning and heating set new standards in performance and efficiency, while the high seat position and curved doors ensure a panoramic view in all directions. ComfortGard Cabs are optional on both 4R and 3R series models.

## Lift and towing hitches

A wide range of efficient and powerful lift and towing hitches, for both the front and rear, increase the versatility of your tractor.

## 6-Year Powertrain Warranty†



## Independent PTO

Forget the days of stopping the tractor and manually engaging the PTO. With the electro-hydraulic PTO you can turn on your implement while you're on-the-go, so you can get your work done faster and easier.

†All Compact Utility Tractors purchased new from an authorised John Deere Dealer come standard with a 6 year/2000 hour (whichever comes first) Powertrain Warranty. See the Limited Warranty Statement for New John Deere Turf and Utility Equipment for more details. Not all compact utility tractors offer the features shown on these pages. Please see the product pages for details or check the specification charts.



### 1, 2 & 3E Series—hydrostatic transmission

Hydrostatic transmission with Twin Touch™ pedals for ease of use and precise operation.

### 3 & 4 Series—eHydro™ and PowrReverser™ transmissions

- eHydro provides an exclusive three range electronic hydrostatic transmission with effortless Twin Touch pedals.
- PowrReverser allows clutchless, hydraulic shifting between forward and reverse with a single lever.



### Operator station

Work safely in a spacious, ergonomic environment.



### Intuitive control layout & colour-coded display

Innovative control console, ergonomic layout. Performance Tracking System: indicates status of machine vital system and helps monitor performance.



### Seat of power

The deluxe cloth seat, available with ComfortGard Cab, keeps operators relaxed and focused all day.



### 4-wheel drive & differential lock

Four wheel drive provides extra traction in challenging conditions and increased pulling power. A differential lock also delivers more on-the-go engagement.





**Quik-Park™ loader mounting system**

R Series Loaders are designed for easy, tool-free mounting and removal. The parking stand is attached to the front frame of the tractor and becomes an integral part of the loader during loader operation. To drop the loader to the 'park' position, just lift the joystick after opening the latches.



**Loaders**

When you need a loader, you need one that's been designed to work perfectly with the tractor and its hydraulic system. That's just what you get with John Deere. The R series loaders offer premium performance and convenience with a Quik-Park mounting system and built in parking stands. The E series are fixed mounted loaders which are a great choice if your loader never leaves the tractor.

|  |  | 120R                  | 120R                  | 220R                  | 300E                   | 320R                    | 440R                    |
|--|--|-----------------------|-----------------------|-----------------------|------------------------|-------------------------|-------------------------|
|  |  | 1SERIES               | 2025R                 | 2038R                 | 3038E                  | 3R SERIES               | 4 SERIES                |
| <b>Lift Capacity:</b><br>The lift capacity at pivot pin is a gross measure of loader lifting ability.                      | Lift capacity at pivot point (max. height), kg (lb.)                           | 249 (548)             | 250 (550)             | 551 (1212)            | 486 (1,069)            | 725 (1,598)             | 1,006 (2,213)           |
| <b>Lift and Reach:</b><br>Consider how high and far you need a loader to reach. Do you need to load a truck, for instance? | Maximum lift height at pivot point, mm (in.)<br>Reach at max. height, mm (in.) | 1828 (72)<br>543 (21) | 1813 (71)<br>660 (26) | 2165 (85)<br>640 (25) | 2,132 (84)<br>568 (22) | 2,593 (102)<br>562 (22) | 2,796 (110)<br>755 (30) |
| <b>Breakout Force:</b><br>The higher the breakout force, the easier it is to fill the bucket.                              | Breakout force at pivot point, kgf (lbf)                                       | 723 (1,591)           | 723 (1591)            | 859 (1,890)           | 725 (1,595)            | 1509 (3327)             | 1,744 (3,844)           |
| <b>Quik-Park loader</b>  |  | ■                     | ■                     | ■                     |                        | ■                       | ■                       |
| <b>Mechanical Self-Levelling (MSL)</b>   |  | ■                     | ■                     | ■                     | ■                      | ■                       | ■                       |

## AutoConnect™ mowing decks

The John Deere AutoConnect mowing deck attaches in seconds, saving you time every time you mow. The deck and driveshaft automatically connects when you drive over it. Then when you're done, simply reverse back over to disconnect again—all from the comfort of your seat.



### DRIVEOVER WITH AUTOCONNECT

|       | 137 cm (54 in.) | 152 cm (60 in.) | 183 cm (72 in.) |
|-------|-----------------|-----------------|-----------------|
| 1023E | ■               | ■               |                 |
| 1025R | ■               | ■               |                 |
| 2025R | ■               | ■               |                 |
| 2038R |                 | ■               | ■               |
| 3039R |                 | ■               | ■               |
| 3046R |                 | ■               | ■               |

### Choose your width

Our mowing decks come in different widths, with an optional material collection system for even more flexibility.

## Additional equipment

### Material Collection System (MCS)

The 3-Bag Power Flow™ has a 493 (14 bu.) capacity that can be easily removed to spread clippings in a compost area or transfer to a bag for removal. The chute connecting the Power Flow to the hopper comes with a fill indicator so an operator can tell how full the hopper is without having to leave the seat.

### Rotary Tillers

John Deere provides high-quality rotary tillers in a choice of widths to match the tractor's horsepower and meet the needs of consumer and commercial customers.

### Front Blades

Both the 137 cm (54 in.) and 152 cm (60 in.) Quick-Hitch front blades will make short work of gravel, dirt or other loose material. The front quick-hitch mounting system allow for tool-free installation and removal. The 366 front blade is suited to larger compact utility tractors with a width of 168 cm (66 in.).



|       | MCS              |     | TILLERS |     |     |             | BLADE |  |
|-------|------------------|-----|---------|-----|-----|-------------|-------|--|
|       | 3-Bag Power Flow | 647 | 655     | 665 | 673 | Quick-Hitch | 366   |  |
| 1023E | ■                | ■   |         |     |     | ■           |       |  |
| 1025R | ■                | ■   |         |     |     | ■           |       |  |
| 2025R | ■                | ■   | ■       |     |     | ■           |       |  |
| 2038R |                  | ■   | ■       | ■   |     |             | ■     |  |
| 3038E |                  | ■   | ■       | ■   |     |             |       |  |
| 3039R |                  | ■   | ■       | ■   | ■   |             | ■     |  |
| 3046R |                  |     | ■       | ■   | ■   |             | ■     |  |



# 1 Series

The 1023E and 1025R Compact Utility Tractors offer perfect stability and ride comfort, and are easy to park and store. Designed for a wide range of tasks, these sub-compact tractors let you switch tools or attachments easily and quickly. Standard features include a hydrostatic transmission, 4WD and power steering for smooth operation.



1 Series Tractors are designed from the ground up to do just about anything. You get a landscaper and a finish mower—all in one. Not to mention a garden hand, seeder, and fence-builder.

### Easy lift bonnet

With an easy lift bonnet and standard twin gas-charged lift struts. Just flip the latch for wide-open access to the engine bay.

### Engine

A reliable high torque 3-cylinder diesel engine with large cooling surface area for sustained performance.

### Quality

The 1 Series tractors have spur gear final drives for durability, and wet disc brakes for no-nonsense stopping power.

### Tilt steering

Tilt steering lets you keep your arms in a natural position for less fatigue.



### Attachment Ready

Mid and rear PTO for attaching implements.



### The 1023E

The 1023E sub-compact utility tractor is affordable and great value. The generous wheelbase offers great stability. The 16 kW (21.5 hp) engine provides plenty of muscle and torque and is great for mowing among many other things.

### 1023E

|  |
|--|
| 16 kW (21.5 hp) at 3,200 rpm<br>(SAE J1995 Power at rated speed) |
| Displacement: 0.99 L   |
| Two range Hydrostatic / Two Pedal Automatic                      |
| Lift Capacity: 344 kg<br>(at 610 mm [24 in.] behind lift ends)   |
| Weight: 610 kg<br>(base tractor)                                 |
| Four-wheel drive   |
| Power steering   |

### The 1025R

A three-cylinder diesel engine that delivers responsive, efficient horsepower in just about any application. Capable of everything from mowing an acre of lawn to digging out a water feature or drainage ditch. Low effort power steering, terrain-conquering 4WD, cruise control, and the differential lock system for extra traction are all standard.

### 1025R

|  |
|--|
| 17.8 kW (23.9 hp) at 3,200 rpm<br>(SAE J1995 Power at rated speed) |
| Displacement: 1.26 L   |
| Two range Hydrostatic / Two Pedal Automatic                        |
| Lift Capacity: 344 kg<br>(at 610 mm [24 in.] behind lift ends)     |
| Weight: 655 kg   |
| Deluxe seat  |
| Four-wheel drive   |
| Power steering   |
| Cruise control   |

# 2 Series

Why compromise? Our versatile 2 Series Tractors are easy to use and manoeuvre and offer all the big tractor stability and reliability you expect from John Deere. The liquid-cooled diesel engines deliver high power and speed, while the heavy-duty axles, 4WD and Category 1, rear 3-point hitch, are ideal for heavy work. Visibility and attachability are better than ever for continued productivity.



## The 2025R

This 17.8 kW (23.9 hp) Sub-Compact Utility Tractor is really the ultimate mini landscaper with features like cruise control and high towing capacity to increase productivity.

## The 2038R

The 27.4 kW (36.7 hp) 2038R Compact Utility tractor is the ultimate 2 Series if you have bigger tasks to take-on. You'll get all the great engineering and intuitive features that are standard on the 2025R plus more grunt and comfort to tackle bigger jobs.

## 2025R

|  |
|--|
| 17.8 kW (23.9 hp) at 3,200 rpm<br>(SAE J1995 Power at rated speed) |
| Forward Speed: 19.8 km/h   |
| Two range Hydrostatic / Two Pedal Automatic                        |
| Lift capacity: 415 kg<br>(at 610 mm [24 in.] behind lift ends)     |
| Towing Capacity: 1,370 kg  |
| Weight: 851 kg   |
| Deluxe suspension seat   |
| Four-wheel drive   |
| Power steering   |
| Cruise control   |

## 2038R

|  |
|--|
| 27.4 kW (36.7 hp) at 2,500 rpm<br>(SAE J1995 Power at rated speed) |
| Forward Speed: 22.1 km/h   |
| Two range Hydrostatic / Two Pedal Automatic                        |
| Lift capacity: 675 kg<br>(at 610 mm [24 in.] behind lift ends)     |
| Towing Capacity: 1,810 kg (unbraked)                               |
| Weight: 1,320 kg   |
| Deluxe suspension seat   |
| Four-wheel drive   |
| Power steering   |
| Cruise control   |
| eThrottle  |

## Comfortable operator station

The ergonomic layout and convenient colour coded controls allow for easy identification and operation. The design of the operator station provides comfort and increased stability and visibility.

## Slanted hood design

The slanted hood design on our compact tractors offers great visibility.

## The LCD Display

Offers a view into many of your key machine functions to monitor tractor performance (2038R).

## Engine

Compact diesel engines have pulling power to spare.



## Rear hitch

This Category 1 rear 3-pt hitch can operate a wide range of implements. For even more versatility, order the optional front lift hitch kit.

## eThrottle

Allows the machine to automatically increase or decrease engine speed as the operator presses on either of the Twin Touch™ pedals. Beneficial when transporting the machine on roadways because it allows the operator to keep both hands on the wheel and have full control of the machine with their feet. The increased efficiency also delivers improved fuel economy.



## CommandCut™

The 2038R features an electronic height of cut control for quick and accurate adjustment of the mower deck with the flip of a switch. Height of cut is shown in the operator display panel for convenience. Repeat operation is therefore simple.

## 3-point front hitch

Compact and powerful for increased versatility of your machine. The 2038R even features an electric lock out valve activated easily from the operator seat for secure transportation operation. Lift it, lock it, done!



# 3E Series

Why compromise on performance or capability? The 3038E Compact Utility Tractor is a simple, affordable machine that gets things done without making a fuss. The tight turning radius and great ergonomics make work easy—and the quality is John Deere through and through.

## Nimble performer

The 3038E is a joy to manoeuvre in tight spots and confined spaces. With a 112 cm (44 in.) turning radius, nothing will stand in your way.

## 3038E

|  |
|--|
| 27.7 kW (37.1 hp) at 2,600 rpm<br>(SAE J1995 Power at rated speed) |
| Max. Torque: 120 Nm at 2,600 rpm                                   |
| Two range Hydrostatic / Two Pedal Automatic                        |
| Lift Capacity: 615 kg<br>(at 610 mm [24 in.] behind lift ends)     |
| Towing Capacity: 1,300 kg (unbraked),<br>2,000 kg (braked)         |
| Weight: 1,210 kg   |
| Rear PTO   |



### Category 1 rear 3pt hitch

High lift capacity to operate a wide variety of implements.





## The all rounder

Our 3E Series tractors combine simplicity and ease of operation with 'big tractor' features like rear power take-off (PTO) and power assisted steering. The power steering is fueled by a dedicated hydraulic pump. Something you'll appreciate when you've got some serious loader work to do.



### Ag tyres

When traction is more important than potential ground damage, specify our bar tread R1 agricultural tyres for uncompromising all-year pulling power.

### Standard four-wheel drive and differential lock

The standard four-wheel drive and differential lock add traction to help negotiate sandy soil, mud, snow and tough chores.

### Open operator station

The open operator station is wide and comfortable. The controls are intuitive and clearly labeled.

### Easy lift bonnet

The 3038E model now has an easy lift bonnet with standard, twin gas-charged lift struts. Just flip the latch for wide-open access to the engine bay.

### Engine

A reliable turbocharged engine with direct fuel injection for more efficient fuel consumption and improved starting in lower temperatures.



# 3R Series

To help you use the power of your 3R Series tractors to the full, we fit a whole suite of advanced features as standard. These include 4WD, a digital performance tracking system and LoadMatch™ — an incredible electric engine power management system for peak performance in every application.

## Engine

The 3-cylinder Yanmar diesel engines have ample torque for heavy workloads, and are designed to run quieter and cleaner without sacrificing performance. The common rail system (CRS) boosts performance by burning fuel more effectively, while the electronic control unit (ECU) adjusts fuel delivery on-the-fly for the perfect mix of power and emissions.

## 3039R

|  |
|--|
| 28.5 kW (38.2 hp) at 2,600 rpm<br>(SAE J1995 Power at rated speed) |
| Max. Torque: 127 Nm at 1,690 rpm                                   |
| Lift Capacity: 995 kg<br>(at 610 mm [24 in.] behind lift ends)     |
| Towing Capacity: 2,190 kg (unbraked)<br>2,190 kg (braked)          |
| Weight: 1,363 kg – 1,766 kg  |

Transmission Options:

|   |
|---|
| Three range eHydro™ / Two Pedal Automatic |
| 12/12 PowrReverser™                       |

## 3046R

|  |
|--|
| 33.3 kW (44.7 hp) at 2,600 rpm<br>(SAE J1995 Power at rated speed) |
| Max. Torque: 142 Nm at 1,690 rpm                                   |
| Transmission: Three range eHydro /<br>Two Pedal Automatic          |
| Lift Capacity: 995 kg<br>(at 610 mm [24 in.] behind lift ends)     |
| Towing Capacity: 2,190 kg (unbraked)<br>2,190 kg (braked)          |
| Weight: 1,363 kg – 1,766 kg  |





### Maximise your productivity

Match your tractor’s performance to the task in hand effortlessly with eHydro, our 3-range electronic transmission with Twin Touch™ pedals:

- **LoadMatch**: adjusts driving speed to engine load for maximum performance and no stalling.
- **MotionMatch™**: adjusts transmission response instantly for adapted back-and-forth loading.
- **SpeedMatch™**: sets a constant speed in 0.1 km/h steps during aeration / spraying or in confined spaces.
- **Cruise control**: set a ground speed and keep it, the same as in your car.
- **eThrottle**: The eThrottle makes 3R Series Tractors quieter and more fuel efficient at the push of a button. With eThrottle activated, depressing the travel pedal increases both engine rpm and tractor speed simultaneously. Saving fuel has never been more comfortable or more convenient.



### eHydro or PowrReverser transmission

- eHydro provides an exclusive three range electronic hydrostatic transmission with comfortable (electrical) Twin Touch pedals.
- PowrReverser provides a hydraulically shifted forward to reverse transmission, which allows clutchless shifting between forward and reverse with one lever (3039R only).



### New to 3R series

The 3R series receives new lighting arrangements. Both the automotive style head lights and helpful work lights now feature LED technology. 3R Cab models also receive an LED safety beacon light.



### Standard joystick

Allows operation of front or mid mounted implements in an attractive and functional factory-installed package.

# 4M Series

The 4M Series gives you the power and control of a fully grown farm tractor. With a 4-cylinder diesel engine, an eHydro™ or PowrReverser™ transmission, 4WD, and an intuitive control console at your command, you have everything you need to tackle a wide range of jobs effectively and easily.





## Electronics

4M Series now features CAN connectivity, LED lighting kits and a new, easy to read digital display with integrated fuel gauge.

## Ag tyres

For uncompromising all-year grip and pulling power, specify these bar-tread R1 agricultural tyres.

## Rear hitch capacity

The big, 66 L/min hydraulic pump offers power for fast loader cycles, responsive power steering, heavy 3-point-hitch lifts, and great backhoe performance.

## 4066M

48.5 kW (65 hp) at 2,600 rpm  
(SAE J1995 Power at rated speed)

Displacement: 2.1 L

Lift Capacity: 1,229 kg  
(at 610 mm [24 in.] behind hitch ball)

Towing Capacity: 2,860 kg (unbraked), 2,860 kg (braked)

Weight: 1,710 kg

Transmission Options:

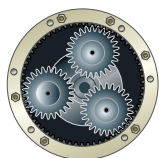
Three range eHydro / Two Pedal Automatic

12/12 PowrReverser

Optional:  
- Wheel spacers  
- Canopy

## Engine

Powerful 4-cylinder diesel engine with high torque reserve and designed to run quietly. The direct injection delivers fast starts, even in cold temperatures and runs clean, meeting the emission standards. In addition, the 4066M features a diesel particulate filter for reduced engine emissions.



## Planetary gears

Planetary final drives are the same as the design used on our high-horsepower John Deere tractors, offering exceptional reliability by spreading the load over three gears.



## PowrReverser transmission

The PowrReverser gear transmission is ideal for loader work. Just move a lever to shift smoothly between forward and reverse—no clutch required.

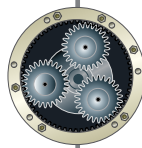


## e-Hydro transmission

With TwinTouch™ pedals, LoadMatch™, to help prevent stalls if the torque load increases on the engine, MotionMatch™, to control how quickly you accelerate or decelerate and a Cruise Control option. Just like in a car.

# 4R Series

Our premium 4R Series tractors are specially designed to make life easier! LoadMatch™ eliminates stalling by automatically matching engine speed to the engine load. Standard Hitch Assist makes the rear hitch faster to use and safer. The optional self-levelling Quik-Park™ Loader attaches in less than three minutes, and the standard air ride seat keeps you comfortable and productive all day long.



## Planetary gears

This is the same final drive layout we fit in our bigger tractors. It improves reliability by spreading the load over three gears.



## 4044R

31.7 kW (42.5 hp) at 2,600 rpm  
(SAE J1995 Power at rated speed)

Forward speeds: 30.1 km/h

Displacement: 2.10 L

Three range eHydro™ / Two Pedal Automatic

Lift Capacity: 1,229 kg  
(at 610 mm [24 in.] behind hitch ball)

Towing Capacity: 2,860 kg (unbraked)  
2,860 kg (braked)

Weight: 1,710 kg

## 4066R

48.5 kW (65 hp) at 2,600 rpm  
(SAE J1995 Power at rated speed)

Forward speeds: 30.1 km/h

Displacement: 2.10 L

Three range eHydro / Two Pedal Automatic

Lift Capacity: 1,229 kg  
(at 610 mm [24 in.] behind hitch ball)

Towing Capacity: 2,860 kg (unbraked)  
2,860 kg (braked)

Weight: 1,710 kg – 2,120 kg

ComfortGard™ Cab (optional)



### Standard 2-function joystick

Ergonomically located integrated joystick for maximum control and comfort during operation of front or mid-mounted implements. The 4044R also features an integrated 3rd function which is ideal when using a multi-function bucket etc.



### Hitch assist

Couple attachments to the rear hitch quickly and safely with this intelligent feature which allows the operator to stand at the rear of the tractor and move the entire machine forward and backwards in addition to lifting and lowering the rear hitch. Simple, safe and effective.

### Common rail engine

Intelligent common rail engines control fuel injection timing and provide precise control for the start, duration and end of injection for increased performance.

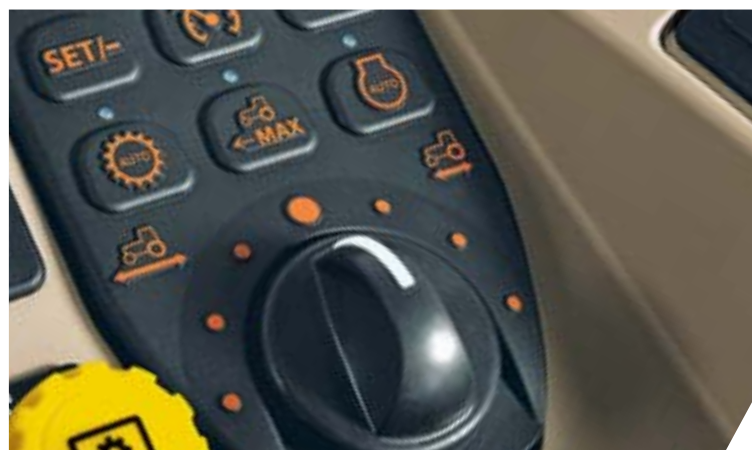


### New to 4R series

The 4R range brings new technology to the field with CAN connectivity and LED lighting.

Both the head lights and work lights receive LED technology for greater visibility. 4R Cab models also benefit from an LED beacon light.

4R Cab models also now feature an electro-hydraulic rear hitch control for precise and accurate hitch movements.



### Maximise your productivity

Match your tractor's performance to the task in hand effortlessly with eHydro™, our 3-range electronic transmission with Twin Touch™ pedals:

- **LoadMatch**: adjusts driving speed to engine load for maximum performance and no stalling.
- **MotionMatch™**: adjusts transmission response instantly for adapted back-and-forth loading.
- **SpeedMatch™**: sets a constant speed in 0.1km/h steps during aeration / spraying or in confined spaces.
- **Cruise control**: set a ground speed and keep it, just as in your car.

# Attachments

## 1 Filter Paks

Almost every filter you need to maintain your tractor in one convenient pack. Kit contains: two oil filters, one air filter, one fuel filter and one hydraulic filter. Check serial number of tractor for compatibility.

**TA25769** 1023E

**TA25769** 1025R, 2025R

**LVA21037** 3038E

**TA25768** 3R Series

**TA25765** 4M, 4R Series

## 2 Seat Covers

Cushioned for extra comfort, both covers feature a fabric coating for maximum water resistance.

**LP95233** 1023E, 3R, 4M Series

**LP68694** 1025R, 2025R (w/ arm rest)

## 3 External Mirror Kit

**BLV11034 (RH)** 1 – 4 Series

**BLV11035 (LH)** 1 – 4 Series

**LVB24844** 3R, 4 Series (Cab)

## 4 Accessory Mounting Bracket Kits

For mounting mobile phones and tablets easily within the cab of your tractor.

## 5 Canopy

Beat the sun and inclement weather with a canopy to provide extra protection for the operator. Additional mounting kit LVB25332 required.

**LVB25334** 2036R, 3 – 4 Series

## 6 Rear wiper kit

Kit includes a wiper and wiper nozzle to disperse washer fluid.

**BXX11122** 3R, 4 Series (Cab)

## External Tool Boxes

This heavy-duty steel tool box can easily be installed in three different places on your tractor.

**LVB26110** 1025R

**LVB24930** 3R Series (Cab)

**LVB24865** 4M Series

## Horn Kit

Kit includes all necessary hardware and components.

**BLV10359** 3R, 4 Series

## Air Seat Suspension Kit

Ride in comfort over any terrain. The vertical and horizontal seat suspension reduces fatigue to let you work longer hours.

**RE265955** 3R, 4M Series

**LVB25688** 3R Series (Cab)

**BLV10401** 4 Series (OOS)

## Compact Utility Tractor Cover

Heavy-duty protection from the elements. Reinforced air vent lets air circulate and helps prevent ballooning in wind.

**CPLP95637** 1 – 3 Series (OOS)

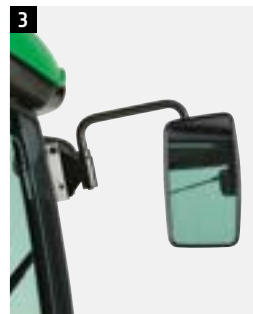
## Safety

### 7 Back-up alarm kit<sup>^</sup>

Alert bystanders when you are reversing with this audible alarm that sounds when the tractor is in reverse.

**BLV10648** 3R Series

**BLV10358** 4R Series (OOS)



<sup>^</sup> Not for PowrReverser™ transmission.

This literature has been compiled for general circulation, some accessories may need additions to ensure correct fitment in compliance with local regulations. Visit your dealer for a complete list of all the requirements needed for your chosen attachment and find a compatible solution for your equipment.



## 1 Lights

### Rear work lights

Shed some light especially when working with rear implements.

**BLV10673** 1 – 2 Series

**BXX10982** 3R, 4 Series (OOS)

**BXX11037** 3 – 4 Series (Cab)

### Forward lighting kit

Two lights mount to brush guards located on the Roll Over Protection Structure. (Forward lighting kit standard on cab units)\*.

**LVB25546** 1 – 4 Series (OOS)

**BLV10497 (LED)** 1 – 4 Series (OOS)

**BLV10673 (LED)** 1025R, 2 Series

### Beacon light

**LVB24852** 3R, 4R Series

## 2 John Deere Quik-Knect™

Click in PTO driven implements (115 PTO HP or less) to the back of your tractor the easy way without scraping your knuckles or getting your fingers pinched. The splines just click into place.

## 3 Power beyond

Get power to the rear of your tractor in order to operate attachments that contain a control valve such as a backhoe.



## Weight

### 4 Quik-Tatch weights

Ballasting is made easy with these individual weights. Moulded-in handles make installation and removal easy.

**UC13263 (19 kg)** 1 – 4 Series

**LVU32113 (32 kg)** 2036R, 3 – 4 Series

**LVB25705 (Rod)** 3 – 4 Series

### 5 Rear wheel weights

For improved traction and balance on slippery terrain.

**BMI7965 (27 kg)** 2 Series, 3038E

**T19293 (48 kg)** 3R, 4 Series

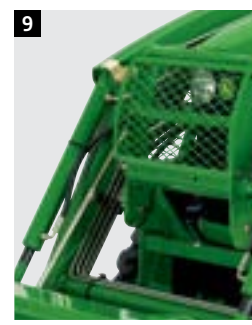
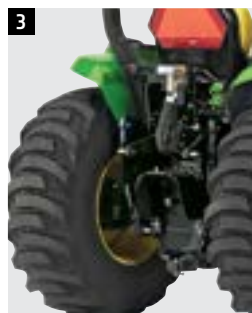
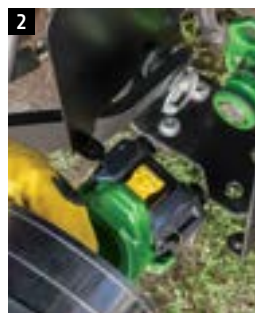
### Ballast boxes

Enhance loader performance in all conditions with correct ballasting. Order a ballast box extension to add even more ballasting to the rear.

**BXX10684** 1 – 4 Series

### Ballast box extension

**BWI5074** 1 – 4 Series



## Rear hitch

### 6 iMatch™ Quick-Hitch Category 1

Attaching an implement becomes as easy as backing up to the implement, hydraulically lifting the unit and securing the latches all from the comfort of your own seat.

**LVB25976** 2 – 3 Series

### 7 John Deere Quick-Hitch blade

For removing or grading loose material.

## Tractor Protection

### 8 Hood guard

Protect your grille from brush, debris and those inevitable knocks during dumping or loading.

**BW15900** 1 Series

**AXX10478** 3038E

**BW16617** 3R Series

**BXX10458** 4 Series

### 9 Deluxe hood guards\*\*

The hood guard's wrap-around design combined with mesh front provides superior protection from debris and brush.

**BW15901** 1 Series, 2025R

**BW16585** 3R Series

**BW16989** 4 Series

\*All dependent on model type. Speak to your John Deere Dealer for specific information.

\*\* Not road legal. - Mesh available on 3R and 4 Series models.

## Specifications



1023E

### 1E SERIES



1025R

### 1R SERIES

#### ENGINE

|   |                            |                            |
|---|----------------------------|----------------------------|
| Type  | 3-Cylinder Diesel          | 3-Cylinder Diesel          |
| SAE J1995 Gross engine power at rated speed kW (hp)<br>(Performance obtained and corrected in accordance with<br>SAE J1995@ Revised December, 2013) | 16 (21.5) at 3,200         | 17.8 (23.9) at 3,200       |
| Rated PTO kW (hp)   | 11.1 (14.9)                | 12.8 (17.2)                |
| Displacement, L   | 0.99                       | 1.27                       |
| Max Torque, Nm  | 54                         | 62                         |
| Air Cleaner   | Dry Type w/ Safety Element | Dry Type w/ Safety Element |
| Fuel Tank Capacity, L   | 23.9                       | 23.9                       |

#### DRIVETRAIN

|                      |   |   |
|----------------------|---|---|
| Transmission – Hydro | Two range Hydrostatic / Two Pedal Automatic | Two range Hydrostatic / Two Pedal Automatic |
| Max. Speed, km/h     | 14.6  | 14.6  |
| Brakes               | Wet Disc                                    | Wet Disc                                    |
| Steering             | Power Steering                              | Power Steering                              |
| Differential Lock    | Standard                                    | Standard                                    |
| 4-Wheel Drive        | Standard                                    | Standard                                    |
| Cruise Control       | No  | Standard                                    |

#### HYDRAULIC SYSTEM

|                   |             |             |
|-------------------|-------------|-------------|
| Type              | Open Centre | Open Centre |
| Total Flow, L/min | 24.5        | 24.5        |
| Implement, L/min  | 13.2        | 13.2        |
| Steering, L/min   | 13.2        | 13.2        |

#### HITCH

|  |          |          |
|--|----------|----------|
| Category 1 Rear 3pt Hitch                          | Standard | Standard |
| Lift Capacity 610 mm (24 in.) Behind Lift Ends, kg | 344      | 344      |

#### PTO

|                 |                        |                        |
|-----------------|------------------------|------------------------|
| Type            | Independent            | Independent            |
| Location        | Mid and Rear, standard | Mid and Rear, standard |
| Speed rear, rpm | 540                    | 540                    |

#### SAFETY

|                        |                                    |                                    |
|------------------------|------------------------------------|------------------------------------|
| ROPS                   | Complies with ASAE, OSHA Standards | Complies with ASAE, OSHA Standards |
| Operator Safety System |                                    |                                    |
| – PTO Brake            | Standard                           | Standard                           |
| – Operator Present     | Standard                           | Standard                           |

#### DIMENSIONS

|                                      |       |       |
|--------------------------------------|-------|-------|
| Total Length with 3pt Hitch, mm      | 2,750 | 2,750 |
| Total Width, mm                      | 1,202 | 1,202 |
| Wheelbase, mm                        | 1,450 | 1,450 |
| Height with ROPS, mm                 | 2,288 | 2,288 |
| Weight, kg                           | 610   | 655   |
| Front Axle Capacity (continuous), kg | 612   | 612   |
| Rear Axle Capacity (continuous), kg  | 715   | 715   |

#### TYRES

|                |       |                    |                    |
|----------------|-------|--------------------|--------------------|
| R1 Ag          | Front | –                  | –                  |
|                | Rear  | –                  | –                  |
| R3 TURF        | Front | 18 × 8.50 – 10 4PR | 18 × 8.50 – 10 4PR |
|                | Rear  | 26 × 12 – 12 4PR   | 26 × 12 – 12 4PR   |
| R3 TURF Radial | Front | 18x8.50-10 4PR     | 18x8.50-10 4PR     |
|                | Rear  | 26x12-12 4PR       | 26x12-12 4PR       |
| R4 Industrial  | Front | 18 × 8.50 – 10 4PR | 18 × 8.50 – 10 4PR |
|                | Rear  | 26 × 12 – 12 4PR   | 26 × 12 – 12 4PR   |



**2025R**

**2R SERIES**



**2038R**

**2R SERIES**

|   |   |
|---|---|
| 3-Cylinder Diesel                           | 3-Cylinder Diesel, Turbocharged             |
| 17.8 (23.9) at 3,200                        | 27.4 (36.7) at 2,500                        |
| 12.8 (17.2)                                 | 22.7 (30.4)                                 |
| 1.27  | 1.6   |
| 62  | 127 at 1,625                                |
| Dry Type w/ Safety Element                  | Dry Type w/ Safety Element                  |
| 20.4  | 32  |
| Two range Hydrostatic / Two Pedal Automatic | Two range Hydrostatic / Two Pedal Automatic |
| 19.8  | 22.1  |
| Wet Disc                                    | Wet Disc                                    |
| Power Steering                              | Power Steering                              |
| Standard                                    | Standard                                    |
| Standard                                    | Standard                                    |
| Standard                                    | Standard                                    |
| Open Centre                                 | Open Centre                                 |
| 26.9  | 35.2  |
| 13.4  | 20.2  |
| 13.4  | 15  |
| Standard                                    | Standard                                    |
| 415   | 675   |
| Independent                                 | Independent                                 |
| Mid and Rear, standard                      | Mid and Rear, standard. Front, optional     |
| 540   | 540   |
| Complies with ASAE, OSHA Standards          | Complies with ASAE, OSHA Standards          |
| Standard                                    | Standard                                    |
| Standard                                    | Standard                                    |
| 2,808                                       | 3,200                                       |
| 1,255                                       | 1,520                                       |
| 1,600                                       | 1,723                                       |
| 2,383                                       | 2,344                                       |
| 851   | 1,320                                       |
| 612   | 880   |
| 1,100                                       | 1,800                                       |
| —   | —   |
| —   | —   |
| 23x8.50-12 4PR                              | 23x8.50-14 4PR                              |
| 12-16.5 4PR                                 | 14-17.5 4PR                                 |
| 220/55 R12                                  | 200/60 R15                                  |
| 280/70 R16                                  | 300/70 R20 4PR                              |
| 23x8.50-12 6PR                              | 23x8.50-14 4PR                              |
| 12-16.5 6PR                                 | 14-17.5 4PR                                 |

## Specifications



**3038E**

**3E SERIES**

### ENGINE

|   |                                |
|---|--------------------------------|
| Type  | 3-Cylinder Diesel Turbocharged |
| SAE J1995 Gross engine power at rated speed at 2600 rpm, kW (hp)<br>(Performance obtained and corrected in accordance with SAE J1995@ Revised December, 2013) | 27.7 (37.1)                    |
| Rated PTO, kW (hp)  | 22 (29.5)                      |
| Displacement, L   | 1.5                            |
| Max Torque, Nm at rpm   | 120 at 1,680                   |
| Air Cleaner   | Dry Type w/ Safety Element     |
| Fuel Tank Capacity, L   | 28.5                           |

### DRIVETRAIN

|                      |                                       |
|----------------------|---------------------------------------|
| Transmission — Gear  | —                                     |
| Transmission — Hydro | Two range Hydro / Two Pedal Automatic |
| Max. Speed, km/h     | 20.8                                  |
| Brakes               | Wet Disc                              |
| Steering             | Power Steering                        |
| Differential Lock    | Standard                              |
| 4-Wheel Drive        | Standard                              |

### HYDRAULIC SYSTEM

|                   |             |
|-------------------|-------------|
| Type              | Open Centre |
| Total Flow, L/min | 35.2        |
| Implement, L/min  | 20.2        |
| Steering, L/min   | 15          |

### HITCH

|                                 |          |
|---------------------------------|----------|
| Category 1 Rear 3pt Hitch       | Standard |
| Lift Capacity at hitch ball, kg | 615      |

### PTO

|                   |             |
|-------------------|-------------|
| Type              | Independent |
| Location          | Rear        |
| Speed (rear), rpm | 540         |

### SAFETY

|                            |                                    |
|----------------------------|------------------------------------|
| ROPS / Cab                 | Complies w/ SAE and OSHA standards |
| Driver Safety System       |                                    |
| — PTO Brake                | Standard                           |
| — Operator presence system | Standard                           |

### DIMENSIONS\*

|                                      |               |
|--------------------------------------|---------------|
| Total Length with 3pt Hitch, mm      | 2,934         |
| Total Width minimum/maximum, mm      | 1,432 / 1,575 |
| Wheelbase, mm                        | 1,593         |
| Height with ROPS, mm                 | 2,426         |
| Height with Cab, mm                  | N/A           |
| Weight with ROPS / with Cab, kg      | 1,015         |
| Front Axle Capacity (continuous), kg | 880           |
| Rear Axle Capacity (continuous), kg  | 1,200         |

### TYRES

|                 |       |                    |
|-----------------|-------|--------------------|
| R1 Ag           | Front | 7 – 14 6PR         |
|                 | Rear  | 11.2 – 24 6PR      |
| R3 TURF         | Front | —                  |
|                 | Rear  | —                  |
| R3 TURF Special | Front | —                  |
|                 | Rear  | —                  |
| R4 Industrial   | Front | 25 × 8.50 – 14 6PR |
|                 | Rear  | 15 – 19.5 6PR      |
| R4 Industrial   | Front | —                  |
|                 | Rear  | —                  |

\*Machine equipped with 11.2 x 24 6PR R1 rear tyres and 180 x 95–14 6PR R1 front tyres.



3039R

3R SERIES



3046R

3R SERIES

|  |  |
|--|--|
| 3-Cylinder Diesel Turbocharged                             | 3-Cylinder Diesel Turbocharged & Intercooled               |
| 28.5 (38.2)  | 33.3 (44.7)  |
| 22.2 (29.8)  | 25.2 (33.9)  |
| 1.6  | 1.6  |
| 127 at 1,690   | 142 at 1,690   |
| Dry Type w/ Safety Element and Restriction Indicator Light | Dry Type w/ Safety Element and Restriction Indicator Light |
| Open Station – 37.4 / Cab – 47.6                           | Open Station – 37.4 / Cab – 47.6                           |
| 12F/12R PowrReverser™                                      | –  |
| Three range eHydro™ / Two Pedal Automatic                  | Three range eHydro / Two Pedal Automatic                   |
| 30.1   | 30.1   |
| Wet Disc   | Wet Disc   |
| Power Steering   | Power Steering   |
| Standard   | Standard   |
| Standard   | Standard   |
| Open Centre  | Open Centre  |
| 57.7   | 57.7   |
| 34.2   | 34.2   |
| 23.4   | 23.4   |
| Standard   | Standard   |
| 1,061  | 1,061  |
| Independent  | Independent  |
| Mid* and Rear, standard                                    | Mid* and Rear, standard                                    |
| 540  | 540  |
| Complies w/ SAE and OSHA standards                         | Complies w/ SAE and OSHA standards                         |
| Standard   | Standard   |
| Standard   | Standard   |
| 3,145  | 3,145  |
| 1,338 / 1,743  | 1,338 / 1,743  |
| 1,727  | 1,727  |
| 2,305  | 2,305  |
| 2,250  | 2,250  |
| 1,363 (PRT) 1,443 (HST) / 1,766                            | 1,443 / 1,766  |
| 1,450  | 1,450  |
| 2,000  | 2,000  |
| 180/95–14 6PR  | 180/95–14 6PR  |
| 11.2 – 24 6PR  | 11.2 – 24 6PR  |
| 27×8.50 – 15 6PR   | 27×8.50 – 15 6PR   |
| 41×14 – 20 4PR   | 41×14 – 20 4PR   |
| 25/10.50LLx15 6PR  | 25/10.50LLx15 6PR  |
| 41x18LL – 16.1 6PR   | 41x18LL – 16.1 6PR   |
| 25×8.50 – 14 6PR   | 25×8.50 – 14 6PR   |
| 15 – 19.5 6PR  | 15 – 19.5 6PR  |
| 27×8.50 – 15 6PR   | 27×8.50 – 15 6PR   |
| 43×16 – 20 4PR   | 43×16 – 20 4PR   |

## Specifications



4066M

4M SERIES

### ENGINE

|   |   |
|---|---|
| Type  | 4-Cylinder Diesel, Turbocharged & Intercooled |
| SAE J1995 Gross engine power at rated speed at 2600 rpm, kW (hp)<br>(Performance obtained and corrected in accordance with SAE J1995® Revised December, 2013) | 48.5 (65.0)                                   |
| Rated PTO kW (hp)   | 38.7 (51.9)                                   |
| Displacement, L   | 2.1   |
| Max Torque, Nm at rpm   | 207 at 1,690                                  |
| Air Cleaner   | Dry Type, Two Stage                           |
| Fuel Tank Capacity, L   | 56.9  |

### DRIVETRAIN

|                      |   |
|----------------------|---|
| Transmission – Gear  | 12F/12R PowrReverser™                     |
| Transmission – Hydro | Three range eHydro™ / Two Pedal Automatic |
| Max. Speed, km/h     | 30  |
| Brakes               | Wet Disc                                  |
| Steering             | Power Steering                            |
| Differential Lock    | Standard                                  |
| 4-Wheel Drive        | Standard                                  |

### HYDRAULIC SYSTEM

|                   |             |
|-------------------|-------------|
| Type              | Open Centre |
| Total Flow, L/min | 66          |
| Implement, L/min  | 42.6        |
| Steering, L/min   | 23.4        |

### HITCH

|  |          |
|--|----------|
| Category 1 Rear 3pt Hitch                          | Standard |
| Lift Capacity 610 mm (24 in.) Behind Lift Ends, kg | 1,229    |

### PTO

|                   |                |
|-------------------|----------------|
| Type              | Independent    |
| Location          | Rear, standard |
| Speed (rear), rpm | 540            |

### SAFETY

|                        |                                    |
|------------------------|------------------------------------|
| ROPS / Cab             | Complies with ASAE, OSHA Standards |
| Operator Safety System |                                    |
| – PTO Brake            | Standard                           |
| – Operator Present     | Standard                           |

### DIMENSIONS\*

|                                      |             |
|--------------------------------------|-------------|
| Total Length with 3pt Hitch, mm      | 3,390       |
| Total Width, mm                      | 2,092       |
| Wheelbase, mm                        | 1,850       |
| Height with ROPS, mm                 | 2,650       |
| Height with Cab, mm                  | –           |
| Weight with ROPS / Cab, kg           | 1,710 / N/A |
| Front Axle Capacity (continuous), kg | 1,500       |
| Rear Axle Capacity (continuous), kg  | 2,500       |

### TYRES

|                 |       |                  |
|-----------------|-------|------------------|
| R1 Ag           | Front | 8–16 6PR         |
|                 | Rear  | 13.6–28 4PR      |
| R3 TURF         | Front | 27×10.50–15 4PR  |
|                 | Rear  | 44x18–20 4PR     |
| R3 TURF Special | Front | 27×12LL–15 6PR   |
|                 | Rear  | 22.50LLx16.1 6PR |
| R4 Industrial   | Front | 10–16.5 6PR      |
|                 | Rear  | 16.9–24 6PR      |

\*Machine equipped with 13.6 x 28 6PR R1 rear tyres and 8.0 x 16 6PR R1 front tyres.



4044R

4R SERIES



4066R

4R SERIES

|  |   |
|--|---|
| 4-Cylinder Diesel                        | 4-Cylinder Diesel, Turbocharged & Intercooled |
| 31.7 (42.5)                              | 48.5 (65.0)                                   |
| 24.1 (32.3)                              | 38.7 (51.9)                                   |
| 2.1                                      | 2.1   |
| 141 at 1,690                             | 207 at 1,690                                  |
| Dry Type, Two Stage                      | Dry Type, Two Stage                           |
| 56.9 (OOS)                               | 56.9 L (OOS) 55.6 L (Cab)                     |
| —  | —   |
| Three range eHydro / Two Pedal Automatic | Three range eHydro / Two Pedal Automatic      |
| 30                                       | 30  |
| Wet Disc                                 | Wet Disc                                      |
| Power Steering                           | Power Steering                                |
| Standard                                 | Standard                                      |
| Standard                                 | Standard                                      |
| Open Centre                              | Open Centre                                   |
| 66                                       | 66  |
| 42.6                                     | 42.6  |
| 23.4                                     | 23.48   |
| Standard                                 | Standard                                      |
| 1,229                                    | 1,229   |
| Independent                              | Independent                                   |
| Rear, standard                           | Rear, standard                                |
| 540                                      | 540   |
| Complies with ASAE, OSHA Standards       | Complies with ASAE, OSHA Standards            |
| Standard                                 | Standard                                      |
| Standard                                 | Standard                                      |
| 3,390                                    | 3,390   |
| 2,092                                    | 2,092   |
| 1,850                                    | 1,850   |
| 2,650                                    | 2,650   |
| —  | 2,474   |
| 1,710 / N/A                              | 1,710 / 2,120                                 |
| 1,500                                    | 1,500   |
| 2,500                                    | 2,500   |
| 8–16 6PR                                 | 8–16 6PR                                      |
| 13.6–28 4PR                              | 13.6–28 4PR                                   |
| 27×10.50–15 4PR                          | 27×10.50–15 4PR                               |
| 44x18–20 4PR                             | 44x18–20 4PR                                  |
| 27×12LL–15 6PR                           | 27×12LL–15 6PR                                |
| 22.50LLx16.1 6PR                         | 22.50LLx16.1 6PR                              |
| 10–16.5 6PR                              | 10–16.5 6PR                                   |
| 16.9–24 6PR                              | 16.9–24 6PR                                   |



**JOHN DEERE**

## Make room for a John Deere Compact Tractor

Clear out the shed and call into your local John Deere dealer today.

**6-YEAR  
POWERTRAIN  
WARRANTY\***

This literature has been compiled for worldwide circulation. While general information, pictures and descriptions are provided, some illustrations and text may include finance, credit, insurance, product options and accessories NOT AVAILABLE in all countries or regions. In some countries, products and accessories may require modifications or additions to ensure compliance with the local regulations of those countries. PLEASE CONTACT YOUR LOCAL DEALER FOR DETAILS. John Deere reserves the right to change specification and design of all products described in this literature without notice. John Deere's green and yellow colour scheme, the leaping deer symbol, and JOHN DEERE are trademarks of Deere & Company. All photography and illustrations contained herein are copyrighted assets of Deere & Company. †All Compact Utility Tractors purchased new from an authorised John Deere Dealer come standard with a 6 year/2000 hour (whichever comes first) Powertrain Warranty. See the Limited Warranty Statement for New John Deere Turf and Utility Equipment for more details.

[JohnDeere.com.au](http://JohnDeere.com.au)  
[JohnDeere.co.nz](http://JohnDeere.co.nz)

YY2032410AU (08-23)